



## Monmouth County Park System Union Transportation Trail

### PROJECT INFORMATION

---

#### PROJECT DESCRIPTION:

With the January 2017 completion of the multi-use trail along a former railroad right-of-way in Upper Freehold Township known as the Union Transportation Trail, the Park System is now focusing on connections beyond the county borders. One such connection is the installation of a pedestrian underpass below County Route 537, providing a trail linkage between Monmouth and Ocean Counties to points south. The Park System has received a \$1.2 million grant from the federal Transportation Alternatives Program (TAP) to help construct the underpass. Once completed, the Union Transportation Trail will be linked to a two mile trail being constructed in Ocean County. The Town of Plumsted in Ocean County received a \$400,000 grant from the NJTPA. .

The Underpass will consist of a 65-foot long concrete box culvert (minimum inside clearance 10 feet high x maximum inside width of 16 feet) below County Route 537. The existing Union Transportation Trail will be increased in length approximately 600 feet and connect to the Ocean County trail.

**REASON FOR PROJECT:** Provide regional recreation trail opportunities and connections between Monmouth and Ocean Counties.

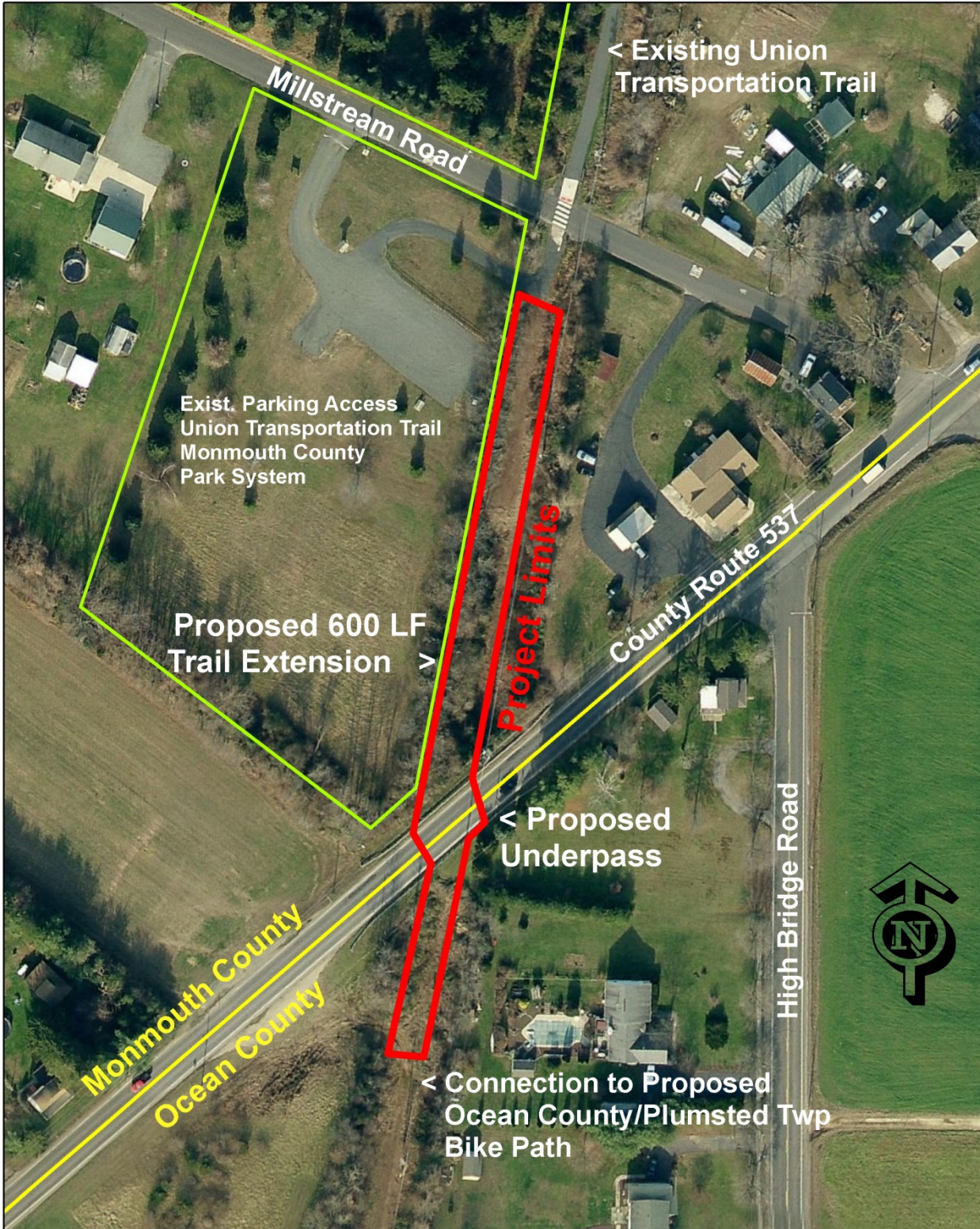
**DESIGN APPROACH:** Utilize existing public lands and rights of way to minimize construction cost and provide safe route for trail users.

**ENVIRONMENTAL CONSIDERATIONS:** Must follow Federal and NJDOT guidelines for environmental and cultural elements.

**PROJECT STATUS:** ***Construction contract was completed in Fall 2019. Awaiting completion of Ocean County trail connection to open underpass.***

**CONTACT INFORMATION:** Andrew North, Chief Landscape Architect  
Monmouth County Park System, Acquisition & Design Department  
(732) 842-4000 ext.4262

**SEE PLAN AND PHOTOS ATTACHED**



**PROJECT MAP: County Route 537 Underpass Extension  
 Union Transportation Trail  
 Monmouth & Ocean Counties**

**1"=100'**

prepared by A. North/MCPS  
 plan created based on GIS data

Construction in progress,



**Construction in progress (above) and completed (below)**

